



Follow to learn more



Xuri Hongyu
High-quality Plastic Supplier

Ningbo Xuri Hongyu Technology Co., LTD

Address: No. 229, Siming East Road, Fenghua District, Ningbo City, Zhejiang Province

Tel :0574-5955 1701

Email :info@xuri-hongyu.com

Website :www.xuri-hongyu.com



Introduction of Xuri Hongyu

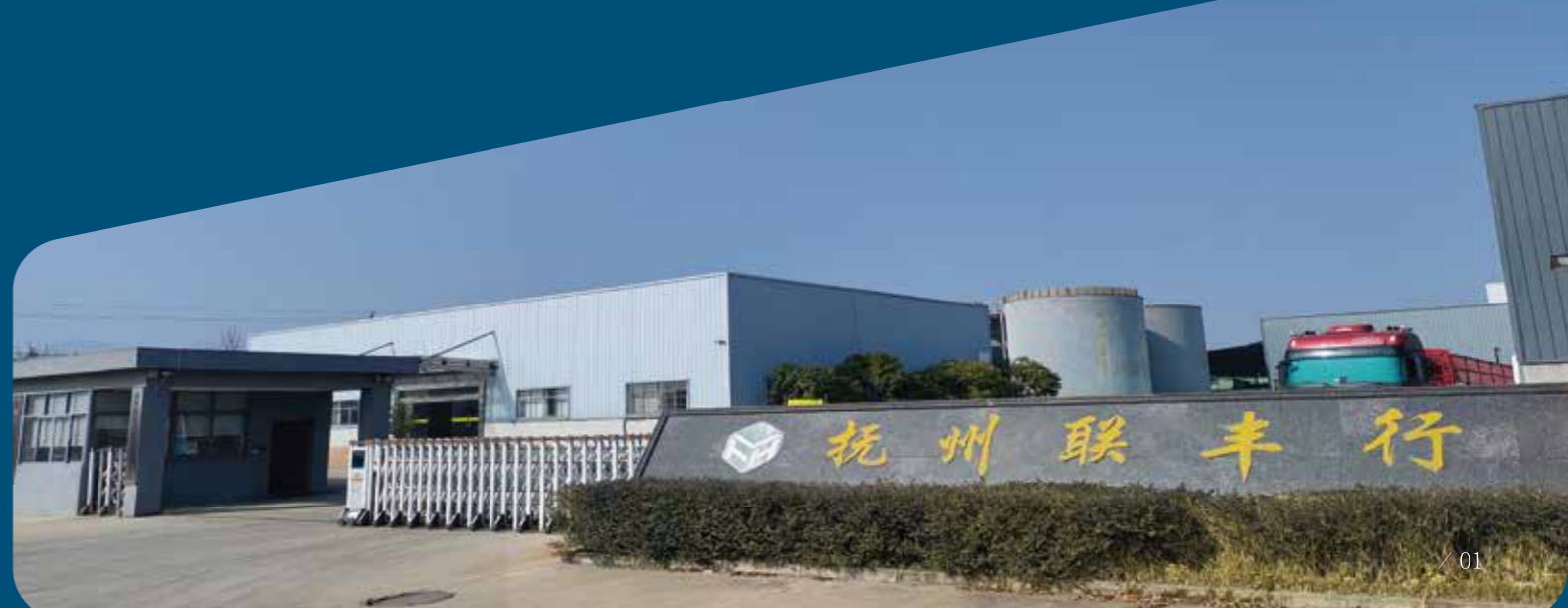
Xuri Hongyu Group was founded in 1994, and its headquarters are in the Ningbo Fenghua Economic Development Zone. The company has four major bases in Ningbo, Fuzhou, Malaysia, and Indonesia, covering an area of over 400 acres. Its annual production capacity is 200,000 tons, and its annual revenue exceeds 15 billion RMB. The company employs over 800 people.

The company focuses on innovation and application in polycarbonate (PC) and engineering plastics, with three primary business segments: recycled plastics (PCR), material compounding, and greenhouse sheets. Its products include PCR-PC/ABS/PET/PP and reinforced composite materials, totaling over 100 products. They are widely applied in household appliances, electric vehicles, medical and healthcare, electrical meters, optical, and construction industries.

After 30 years of market experience and technological accumulation, Xuri Hongyu Group is dedicated to innovation and service, providing solutions for over 1,000 well-known enterprises in more than 100 countries worldwide.

Contents

Company Profile	01
Historical development	02
Corporate Culture	04
Qualifications and Honors	05
Professional Techniques	06
Products	08



1994

Fenghua Hongyu Electrical Factory was established.

2000

Fenghua Hongyu Plastics was established to focus on recycled PC plastics.



Growth

2005

The company had five production lines, with an annual production capacity exceeding 10,000 tons.



2010

Kaiyu New Materials was established and involved in developing new materials based on recycled plastics.

2015

Building a production plant in Fuzhou, Jiangxi, and purchasing 350 acres of land.



2016

The Ningbo base gradually divested from material compounding, plastic sheets, and cleaning businesses and focused on the PCR business.

Breakthrough

Accumulation

2017

Building a 60-acre production plant in Malaysia; meanwhile, Jiangxi plant phase 1 was put into operation.

2018

Building a production plant in Indonesia, the 2 phases of the Jiangxi production plant were put into operation, and Fuzhou Lianfeng was established.



2021

The group company underwent a comprehensive reform to seven principal associates with more product coverage.

2023

The company continued to increase overseas investment, accelerating its layout in the North American and East Asian markets and planning to have production plans in Mexico, Vietnam, and other places.

Transformation

Future

2024

Developing new recycling technologies
Developing high-performance products
Explore overseas markets and establish overseas production plants (Vietnam, Mexico, Poland)
Establish external sales channels.



Our Cultural Concept
People-oriented,
Pursuit of excellence



Our Vision
Internationalization,
Branding, Specialization



Integrity cast quality
Innovation leads the future

Our Mission
Customer success, Brand
success, Employee success



Our Core Values
Integrity, Professional,
Pragmatic, Innovation



Our Spirit
Shared development,
Efficient collaboration



Our Purpose
Make the world a better place

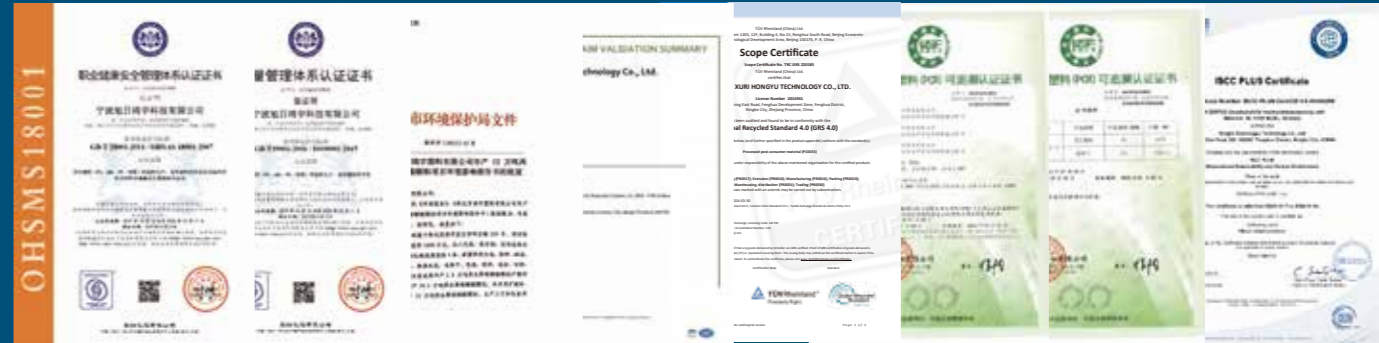


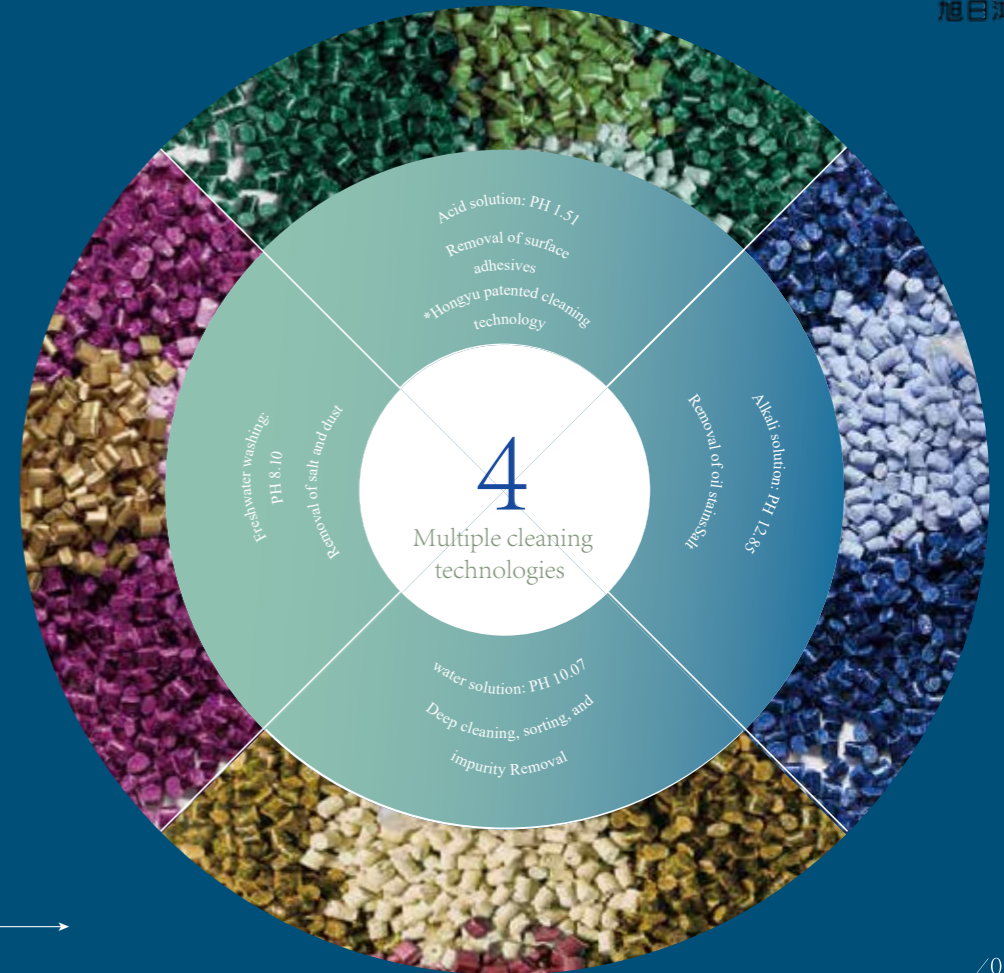
Certification



● TUV,OBP,GRS,UL,ISCC,Traceable certificates

● Patents, and formulation of national standards.





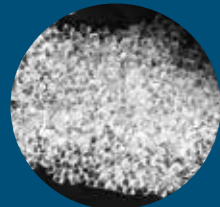
PCR-PC

PCR-PC, post-consumer recycled polycarbonate material.

It has the advantages of high transparency, excellent heat resistance, weather resistance, and mechanical properties.

They are widely used in the fields of electronics, electrical products, optical products, and packaging products.

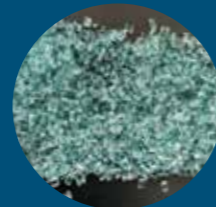
Material sources include buckets, CDs, lampshades, etc.



PC-50S



PC-116A plus



PCRGAWB



PC-20NP



PC-116A



Performance parameters (typical values)

PCR-PC	Source	Melt Flow Index	Tensile strength	Elongation	Bending strength	Bending modulus	Notched IZOD Impact	Density
		g/10min	MPa	%	MPa	MPa	J/m	g/cm ³
Testing standards		ASTM D1238	ASTM D638	ASTM D638	ASTM D790	ASTM D790	ASTM D256	ASTM D792
PC-50S	CD	60-80	55	40	85	2100	100	1.19
PC-116A	CD, Headlight Shell	12-16	60	110	90	2200	500	1.19
PC-116A PLUS	Sheet, Headlight Shell	10-14	60	110	90	2200	700	1.19
PC-20NP	Sheet, Headlight Shell, CD	17-21	60	90	88	2150	500	1.19
PCRGAWB	Water bottle	6-10	65	110	90	2250	700	1.19

Application

· Electronics · Automotive · Drones · Optical



PCR-PET

PCR-PET, post-consumer recycled polyester plastic. The material is made from consumed water bottles that have been sorted, cleaned, and crushed. It can be used in toys, electronic products, packaging, textile, and other fields.



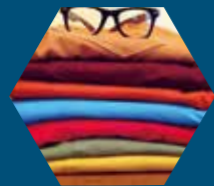
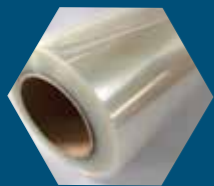
PCR-PET

Performance parameters (typical values)

PCR-PET	Source	Melting point	viscosity	Water content	Ash content	L color value	B color value	Density
		°C	DL/g	%	%			g/cm ³
	Testing standards		ISO1628-5	ISO62	ISO3451			ISO1183
HY0801	Beverage bottle	≥245	0.67±0.03	≤0.4	≤0.08	≥75	≤5	1.395±0.02

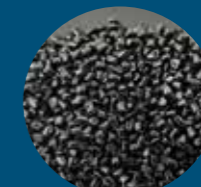
Application

·Electronics·Spinning·Toys



PCR-PBT

PCR-PBT, post-consumer recycled polybutylene terephthalate. It has the advantages of high heat resistance, high strength, and excellent processability. They are widely used in mechanical equipment, precision instrument components, electronics, textiles, and other fields. Material sources include optical cables, electrical enclosures, etc.



PCR-PBT

Performance parameters (typical values)

PCR-PBT	Source	Melting point	Tensile strength	Elongation	Bending strength	Bending modulus	Notched IZOD Impact	Density
		°C	DL/g	%	%			g/cm ³
	Testing standards		ISO1628-5	ISO62	ISO3451			ISO1183
	Beverage bottle	≥245	0.67±0.03	≤0.4	≤0.08	≥75	≤5	1.395±0.02

Application

·Automotive·3C products·communication·electrical appliances



PCR-ABS

PCR-ABS, post-consumer recycled acrylonitrile-butadiene-styrene copolymer.

It has the advantages of high strength, toughness, ease of processing, and coloring.

They are widely used in automotive parts, household appliances, sheet materials, consumer electronics, and other fields.

Material sources include appliance cases, toys, automotive components, etc.



PCR-ABS

Performance parameters (typical values)

PCR-ABS	Source	Melt Flow Index	Tensile strength	Elongation	Bending strength	Bending modulus	Notched IZOD Impact	Density
		g/10min	MPa	%	MPa	MPa	J/m	g/cm ³
	Testing standards	ASTM D1238	ASTM D638	ASTM D638	ASTM D790	ASTM D790	ASTM D256	ASTM D792
	Toys, Automotive	25	40	15	65	2200	150	1.05

Application

·Electronics·automotive·household appliances·tools·luggage



PCR-PP

PCR-PP, post-consumer recycled polypropylene material.

It has good mechanical properties, high heat resistance, and chemical resistance.

They are widely used in daily needs, furniture, medical, household appliances, consumer goods, and other fields.

Material sources include packaging cases, pipes, etc.



PCR-PP

Performance parameters (typical values)

PCR-PP	Source	Melt Flow Index	Tensile strength	Elongation	Bending strength	Bending modulus	Notched IZO D Impact	Density
		g/10min	MPa	%	MPa	MPa	J/m	g/cm ³
	Testing standards	ASTM D1238	ASTM D638	ASTM D638	ASTM D790	ASTM D790	ASTM D256	ASTM D792
	Packaging, pipeline	4	25	50	27	800	80	0.9

Application

·Furniture·automotive·household appliances·tools



PCR-PA

PCR-PA is a post-consumer recycled polyamide material commonly known as nylon.

The material has high mechanical strength, excellent toughness, abrasion, heat, and weather resistance.

They are widely used in household appliances, machinery, textiles, and other fields.

Material sources include airbag fabric, fishing net threads, waste clothing materials, etc.



PCR-PA

Performance parameters (typical values)

PCR-PA	Source	Tensile strength	Elongation	Bending strength	Bending modulus	Notched IZOD Impact	Density	Melting point
		MPa	%	MPa	MPa	J/m	g/cm ³	°C
Testing standards		ASTM D638	ASTM D638	ASTM D790	ASTM D790	ASTM D256	ASTM D792	
PA66 R0300-AC	Airbag	75	5.5	105	2600	4	1.14	262
PA6 P6000-FN-2	Fishing net	50	3	70	2200	3	1.12	220

Application

·Industrial tools·textile·gears·bearings



PCR-PE

PCR-PE, post-consumer recycled polyethylene material.

It can be classified into high-density polyethylene, low-density polyethylene, and linear low-density polyethylene.

They are widely used in films, containers, pipes, etc.

Material sources include beverage bottles, films, etc.



HDPEF101-N

Performance parameters (typical values)

HDPE	Source	Melt Flow Index	Tensile strength	Elongation	Notched IZOD Impact	Density
		g/10min	MPa	%	KJ/m ²	g/cm ³
Testing standards		ISO1133	ISO527	ISO527	ISO180	ISO1183
F101-N	bottle	1.0±0.3	20	300	22	0.94

Application

·Personal care·bottle·piping·toolbox



Materials compounding

Materials compounding is polymer processed from recycled materials by adding other functional materials. Xuri Hongyu's materials compounding comes in a wide variety and exhibits outstanding performance, meeting various production requirements. Xuri Hongyu also supports exclusive customization according to customer needs.

These materials are widely used in automotive, mechanical equipment, home appliances, electrical meters, precision instrument components, electronics, textiles, and more.

The sources of composite materials include discs, discarded electrical casings, waste silk, toys, automotive parts, and others.



PC/ABS AC1260



PC/ABS AC2013



PC/ABS AC3015



PC/ABS SSR-VA80



PC/ABS 阻燃抗静电



Performance parameters (typical values)

Composite	Source	Melt Flow Index	Tensile strength	Elongation	Bending strength	Bending modulus	Notched IZOD Impact	Density	FR
		g/10min	Mpa	%	Mpa	Mpa	kJ/m ²	g/cm ³	
	Testing standards	ASTM D1238	ASTM D638	ASTM D638	ASTM D790	ASTM D790	ASTM D256	ASTM D792	UL94
PC/ABS AC1260	Water bucket, lampshade	20	60	8	90	2500	150	1.26	0.75MM V0
PC/ABS AC2013	Sheet, CD	30	60	15	80	2300	400	1.18	1.5MM V0
PC/ABS AC3015	Instrument panel cover, Water bucket, lampshade	15	60	8	90	3800	120	1.3	1.5MM V0
PC/ABS SRR-VA80	Lampshade, Instrument panel cover, CD	50	60	15	80	2300	350	1.18	2.0MM, 5VB
PC/ABS Flame retardant / anti-static	lampshade, Instrument panel cover, CD	5	60	10	85	2600	20	1.21	3.0MM V0

Application

·Electronics·Automotive·Drones·Optical



Materials compounding

Materials compounding is polymer processed from recycled materials by adding other functional materials. Xuri Hongyu's materials compounding comes in a wide variety and exhibits outstanding performance, meeting various production requirements. Xuri Hongyu also supports exclusive customization according to customer needs.

These materials are widely used in automotive, mechanical equipment, home appliances, electrical meters, precision instrument components, electronics, textiles, and more.

The sources of composite materials include discs, discarded electrical casings, waste silk, toys, automotive parts, and others.



PC C20XX



PC GF10 黑色



PC GF10 白色



PC GF20



Performance parameters (typical values)

Composite	Source	Melt Flow Index	Tensile strength	Elongation	Bending strength	Bending modulus	Notched IZOD Impact	Density	FR
		g/10min	Mpa	%	Mpa	Mpa	kJ/m ²	g/cm ³	
	Testing standards	ISO1133	ISO527	ISO527	ISO178	ISO178	ISO180	ISO1183	UL94
PC C20XX	lampshade, Instrument panel cover, CD	10	60	50	80	2300	55	1.19	1.6MM V0
PC GF10	lampshade, Instrument panel cover, CD	20	50	10	80	2400	10	1.25	3.0MM V0
PC GF20	lampshade, Instrument panel cover, CD	15	85	6	110	3800	6	1.33	GWIT 960°C

Application

· Electronics · Automotive · Drones · Optical

